

# LONGBOW

BARS & RESTAURANTS. ENJOY MORE

## SHORT WALKS



Main Road, Grindleford,  
Hope Valley, S32 2HE

01433 424110



Main Road, Hathersage,  
Hope Valley, S32 1BB

01433 650436

www.longbowbarsandrestaurants.com

## JUBILEE ROCK & HAYWOOD

### DIRECTIONS

- 1 From the front door of the Maynard, turn right uphill along Main Road.
- 2 Take the second right up Tedgness Road, a steep residential street, then turn left at a sign that says 'Public Footpath To Froggatt Edge Road'. Follow the footpath through the gate at Oakes wood House and continue straight on through a second wooden gate as the rocky and uneven path climbs uphill through the woods.
- 3 The path curves up to the right where it arrives at wooden gate in a dry stone wall. Continue straight on through the gate and again through a second gate immediately opposite. Continue straight on across the field, bearing right at the top to a gate in the corner. At this point the Jubilee Rock comes into view ahead. Go through the gate and follow the wall around to the left, then take a short steep path up to the right which leads to the flat top of Jubilee Rock.
- 4 Enjoy the view! Then, take a path which leads away from the edge past a large cairn made of stones and into the trees. Follow as it curves to the right, leading downhill to the National Trust Haywood car park.
- 5 At the car park, take the right fork and follow a sandy path as it loops steeply downhill to the right, then continue straight on through the woods. When the footpath forks stay right, then when it splits a second time take the left-hand fork, following the path until it leads to a gate. Continue straight on through the gate an on to a residential street.
- 6 Turn left at the street, then take the public footpath on the right which crosses a second street to lead all the way down to Main Road and The Maynard on the right.

**DISTANCE:** 3.5 km / 2 miles **TIME:** Allow 1 hour  
**DIFFICULTY:** Easy/moderate (steep and uneven in places) **TOTAL ASCENT:** 135 m /442 ft

## LONGSHAW ESTATE & PADLEY GORGE

### DIRECTIONS

- 1 From the front door of The Maynard, turn left then take the signposted 'Public Footpath to Froggatt Edge Road Via Tedgness' on the left.
- 2 Follow the narrow path steeply upwards, crossing a quiet road, and turn left as it joins a second road at the top. Take the right fork, following a sign for 'Public Footpath To Froggatt Edge Road' through a gate at Oakeswood House. Continue through a second gate and stay on the path as it leads up through the woods. At the top, go through a wooden gate in a dry stone wall and turn left to follow the wall down to a brook. Cross the brook and turn left to continue on the path parallel to the wall, and stay on it as it heads into the woods, where it leads to a small wooden gate in the corner of a wall.
- 3 Through the gate, turn right and follow a rocky trail through the ancient woodlands of the Longshaw Estate. As the path forks, go right then continue straight on through a wooden gate to cross a grassy open area where sheep and cattle graze (please remember to keep dogs on a lead). On the opposite side there is a gravel track with a small stream running under it. Turn left along the track, which eventually leads to a gate and further path that bears right through the woods to a junction. Optional shortcut - Turn left at the junction and down to cross the road (there is usually an ice cream van here). Head down to the river and over a wooden bridge, then turn left to rejoin the route at point 5.
- 4 Turn right at the junction, following the clear track past a pond, and stay on it as it loops around to he left where it eventually leads to a grove of yew trees and a millstone. Take the gate on the left which leads to Longshaw visitor centre and public toilets. From the visitor centre, follow the access road to the left which leads out to the main road. Cross to a white gate opposite the entrance and follow the footpath downhill through the woods. When the path splits take the left fork, continuing down to Padley Gorge where there is a narrow wooden bridge over the stream. Cross and turn left to follow the boggy path alongside the river.
- 5 As the river drops away to the left, continue straight on through a gate and into the gnarled woodland of Padley Gorge. The trail here is uneven and boggy with tree roots and rocks underfoot. The next landmark is a bridge down to the left, which can be hard to spot. Just after a rocky pavement with a stream flowing beneath it, look for a sign for 'Surprise View & Bolehill Quarry' pointing up to the right. Stay on the original path, then turn left at the next opportunity to double back steeply down to the bridge. Cross the river and take the footpath to the right which leads up to join an obvious wide track. Turn right and follow it all the way down through Yarncliff woods.
- 6 As the path rises slightly and emerges by a bus stop, turn right and head downhill along the road to return to The Maynard on the left.

**DISTANCE:** 8 km / 5 miles (optional short cut 5km/3miles) **TIME:** Allow 2:45 hours  
**DIFFICULTY:** Moderate (steep and uneven in places) **TOTAL ASCENT:** 189 m / 620 ft

## RIVER DERWENT TO HATHERSAGE & BACK

### DIRECTIONS

- 1 From the front door of the Maynard turn left and head downhill into the village. At St Helen's church turn right to take the public footpath on the opposite side of the road, which follows the river.
- 2 The footpath crosses a series of fields with grazing sheep, so please remember to keep your dog on a lead. When the path crosses a small concrete bridge over a stream, bear left and continue along the river. Continue straight on all the way through Coppice Wood and straight on again through Harper Lees farm, then turn left to take the private drive out to the main road.
- 3 Optional shortcut - Shortly after joining the drive that leads out of the farm, turn right and follow a public footpath up along a dry stone wall. This leads under a railway bridge and through a gate. Turn right here to rejoin the route at point 5.
- 4 Cross the road with care then turn right and follow it all the way into Hathersage. Turn right at the t-junction opposite The George and head up the main street. After exploring Hathersage, continue out of the village and up the main road.
- 5 Immediately after the Millstone car park, turn right along a public footpath down a gravel track. Follow it towards Throstle Nest, then as it bends sharply to the right leave the track and continue straight on down an uneven set of stone steps alongside a dry stone wall. Follow the path through a wooden gate and continue straight on through the woodlands. At a crossroads with a railway bridge down to the right, continue straight on.
- 6 Follow the path straight on through the woods until it reaches another railway bridge on the right. Turn left away from the bridge and head up through a narrow gate, then bear right towards a wide wooden gate.
- 7 Continue straight on through the gate and follow the track over a cattle grid all the way to Grindleford station. Continue straight on up the station entrance road, then turn right to return to The Maynard.

**DISTANCE:** 10 km / 6 miles (optoal short cut 6 km / 4miles **TIME:** Allow 2.5 hours  
(plus time to explore hathersage) **DIFFICULTY:** Easy **TOTAL ASCENT:** 181 m / 549 ft

### EMBRACE THE OUTDOORS WITH THE MAYNARD PEAK DISTRICT WALKS

Whether you'd like to unwind on a peaceful woodland stroll, or work up an appetite with a full day's hike, we have everything you need, right here. Nestled in a valley in the heart of the Peak District, we're surrounded by some of the UK's most stunning landscapes. To help you get to know our home, The Maynard team have selected six of our favourite walking routes, taking in panoramic views, gritstone edges, ancient woodlands and peaceful pastures straight from our front door.

Sharing some unmissable highlights as well as lesser-trodden trails, our walking routes range from a one hour walk to a twelve-mile hike. To plan your perfect day, talk to our friendly team who can recommend the route for you, and provide a printed guide to help you on your way. When you return, we'll be waiting with a warm welcome as you take a seat for a pint in a cosy corner by the fireplace, or a refreshing Gin and Tonic in the garden.

### THANK YOU FOR LOOKING AFTER OUR HOME!

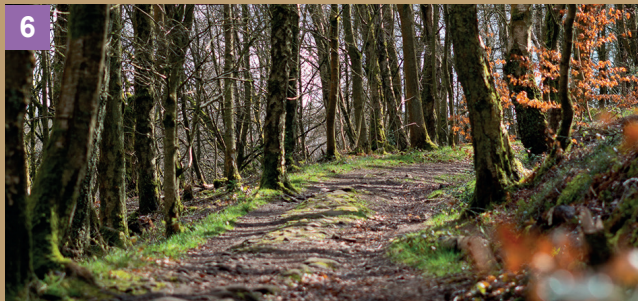
We love welcoming you to our home and thank you for being responsible walkers. Here are a few tips to get the most out of these routes, and keep the National Park in peak condition:

1. All our routes follow public footpaths over moorland or through woodland, so expect to encounter rocks, tree roots and mud. Choose suitable footwear - walking boots or trail running shoes with a good grip are good idea.
2. Bear in mind that the weather on the edges can often be significantly colder and windier than in the valley. Always pack extra layers and a waterproof.
3. The Peak District is home to vulnerable ground nesting birds as well as sheep and lambs. You must keep your dog on a lead around livestock and in lambing and nesting season (1 March to 31 July). Please be considerate to other visitors by cleaning up after your four-legged riends.
4. Many areas can be tinder dry and susceptible to moorland fires which burn unseen in the peat beneath the ground. Be careful when disposing of cigarettes, and remember that barbecues are banned in the national park.
5. Leave it better than you found it - bring everything you take on a walk back home with you (including tissues and toilet roll). If you see litter, bring that out too.
6. In case of emergency in remote areas call Mountain Rescue. Dial 999, ask for Police - Mountain Rescue. You can download the OS Locate app for free, which will give the grid reference for your location anywhere in Britain, even if you don't have phone signal.



### JUBILEE ROCK & HAYWOOD

We love this short route because it really makes the most of our unique location, as we head up to a panoramic viewpoint at Jubilee Rock, then down through the Haywood where red deer roam.



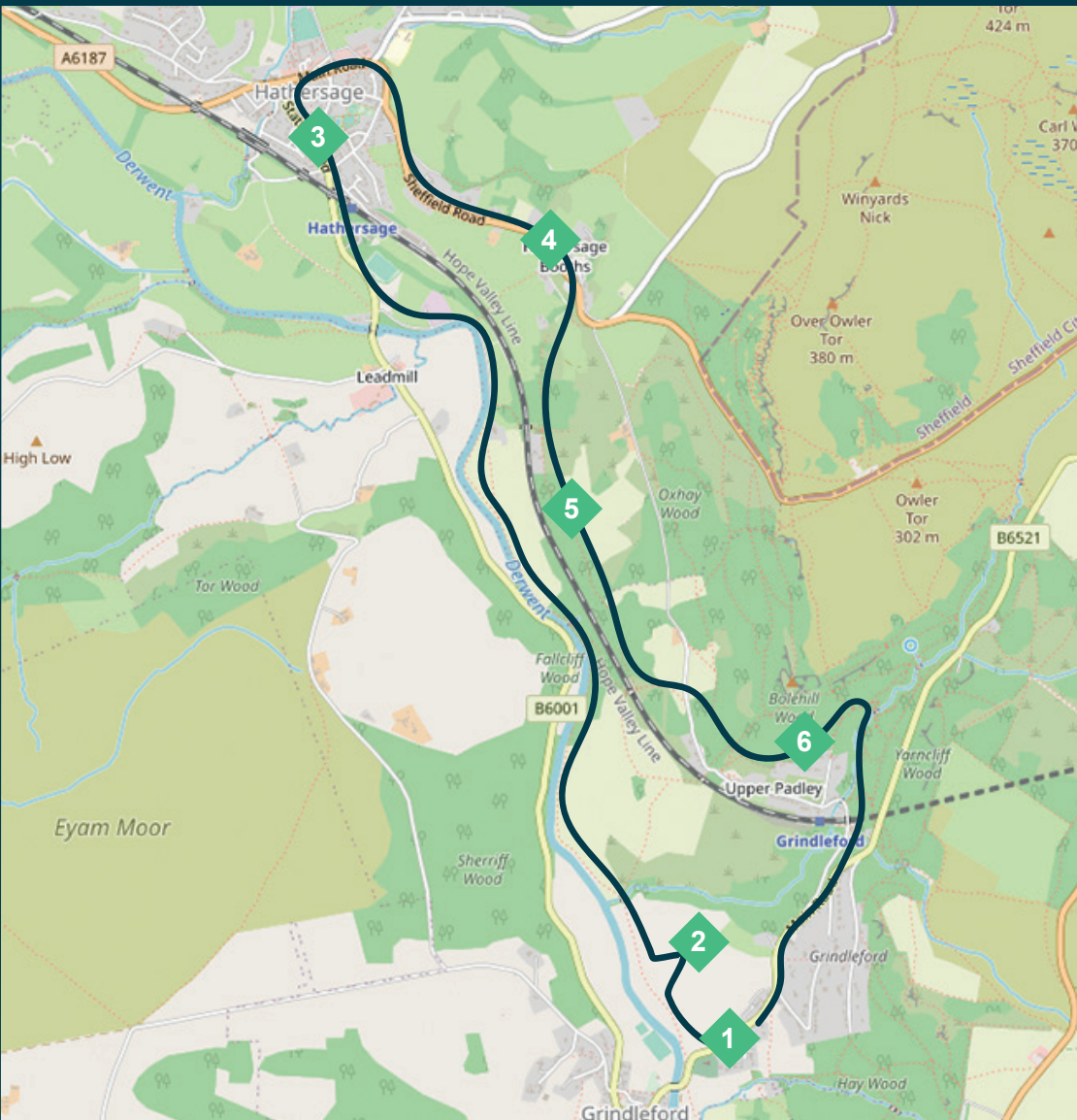
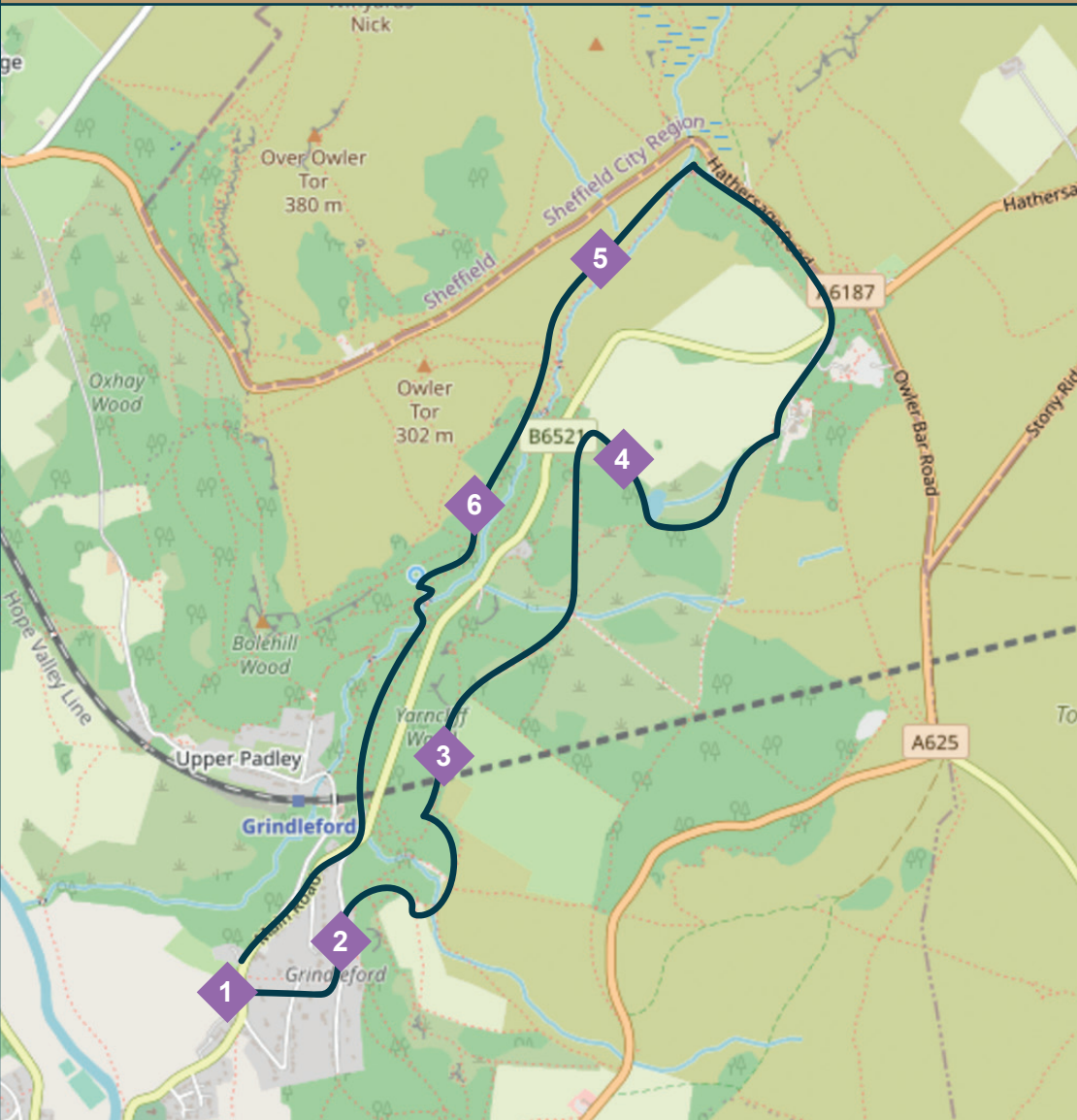
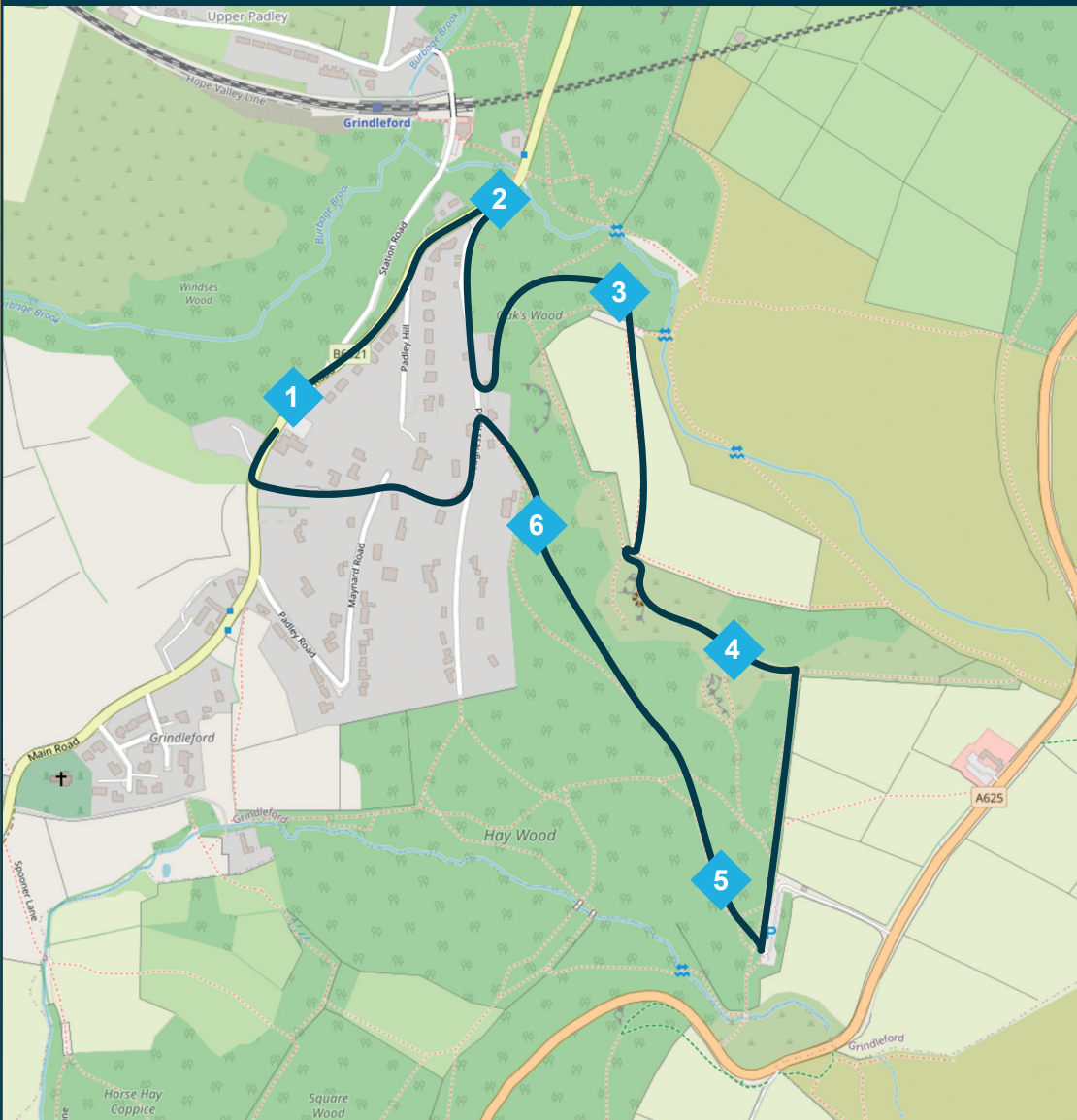
### LONGSHAW ESTATE & PADLEY GORGE

We like this route because it takes us to quieter spots of the popular Longshaw Estate, and explores the river and ancient woodland of Padley Gorge, another of the area's must-see highlights.



### RIVER DERWENT TO HATHERSAGE & BACK

We recommend this relaxing route as part of your perfect Peak District day, following the River Derwent to the bustling hub of Hathersage, then wandering back through quiet woodland.





# LONGBOW

BARS & RESTAURANTS. ENJOY MORE

## LONG WALKS



THE  
MAYNARD

FOOD • DRINK • ROOMS • VENUE

Main Road, Grindleford,  
Hope Valley, S32 2HE

01433 424110



the  
GEORGE

Main Road, Hathersage,  
Hope Valley, S32 1BB

01433 650436

www.longbowbarsandrestaurants.com

## MILLSTONE & SURPRISE VIEW

### DIRECTIONS

- 1 From the front door of The Maynard turn left and walk down the road to St Helen's Church, Grindleford.
- 2 Take the public footpath opposite the church which follows the river through fields. When a small concrete bridge crosses a stream turn right and follow the footpath over a short series of flagstones through a narrowing in the field. Continue uphill parallel to the wall, and immediately after a crumbling wall on the right go diagonally right across the field to a gap in the opposite wall where there is a footpath marker on a post. Turn right and continue up over a railway bridge.
- 3 Turn right through the gate then immediately left before the cattle grid and up through a narrow wooden gate. Shortly afterwards take the left fork and continue steeply up. At a faint crossroads continue straight on as the path gets ever steeper, passing two large boulders. At the top of the slope, take the right fork across a flatter area then stay left, following the sandy path steeply up a narrow rocky gully. At the top of the gully, stay right as the path levels off to cross a tree-covered plateau. Follow the grassy path through the birch wood, which eventually leads past an old stone trough and on to an area with rows of millstones.
- 4 Immediately after the millstones, take a narrow path up to the right to a fence and gate. Turn left through the gate, then continue straight on to cross the road with care. On the opposite side of the road turn left to arrive at a bench and Surprise View. From here follow the path as it loops back round to another gate and continue straight on along a well-defined path towards the car park.
- 5 Go straight on across the car park, then take the gate on the left next to the ticket machine. Follow the footpath steeply up through trees, past a large square boulder and up to a rocky out crop. Follow the path as it bears right, turning left at an obvious crossroads in a small dip, then at a t-junction in the path turn left again. At the next opportunity take the right fork down to a gate in the bottom corner of the field, then continue down to the road below. Turn left along the road, then right at the junction. As the road bends right, take the track on the left signposted 'Greenwood Farm.'
- 6 Stay on this track all the way to Grindleford station, then continue straight on up the entrance road. Turn right on to Main Road which leads quickly back to The Maynard.

**DISTANCE:** 9.5 km / 6 miles **TIME:** Allow 3 hours **DIFFICULTY:** Moderate / hard  
(first half strenuous, then easy going) **TOTAL ASCENT:** 350 m / 1,150 ft

## WHITE EDGE & FROGGATT EDGE

### DIRECTIONS

- 1 From The Maynard turn right and walk uphill along the road. Take the second right up Tedgness Road, then the first left through a gate at Oakeswood House.
- 2 Continue straight on through a second gate and up a steep footpath. As it bends to the right, leave the main path and take a small trail on the right steeply upwards through the trees towards a dry stone wall. At the top turn right then head through a gap in the wall, continuing along the trail with the wall on your left. When the path reaches a wooden gate in the wall on the left, go through the gate and continue straight on across fields all the way to the road.
- 3 Turn right then take the public footpath on the opposite side of the road just before the Grouse Inn. At the opposite side of the field go through a gate and follow the path to turn right, climbing towards the edge up a steep and rocky gully. When the path reaches a break in the wall and an obvious crossroads, turn right along White Edge. From here continue straight on, aiming for a white trig point which becomes visible at the far end.
- 4 Head up to the trig point and enjoy the view, before continuing round to rejoin to the main path. Turn right then almost immediately left to take a narrow trod that crosses the moor. It can initially be hard to spot, but it leads down through a boggy area to a grassy crossroads by the corner of a wall. Continue straight on towards large rocks that mark the edge of the main path along Froggatt Edge, then turn right.
- 5 Stay on the edge path as it trends downhill, it will eventually lead all the way to the road. A series of large boulders to the left of the track indicate that you are above Froggatt Edge, one of the Peak District's most popular areas for rock climbing. Just as the sandy path enters the trees look out for an ancient stone circle on the right. At the road, head uphill for a short way then cross with care on the bend and go through a gate on the left which leads steeply down over a stream and up a cobbled path. Follow a yellow arrow down to the left just before the car park, and continue downhill through the woods.
- 6 When the path splits, take the left fork as it descends all the way through Haywood where it eventually runs alongside a dry stone wall and through a gate. At the very bottom of the wall turn right and go through a narrow gap with a wooden gate. Continue straight on over a series of small fields, leaving at the far end to turn right along the road which leads back up to The Maynard.

**DISTANCE:** 11 km / 7 miles **TIME:** Allow 3 hours **DIFFICULTY:** Med / hard  
(steep, rocky and boggy in places) **TOTAL ASCENT:** 272 m / 892 ft

## STANAGE EDGE EPIC

### DIRECTIONS

- 1 From the front door of The Maynard, turn right then take the road down to Grindleford station on the left. At the station continue straight on over two bridges, then turn right up a gravel track sign posted 'Padley Gorge'. Go through a wooden gate at the top and continue straight on up a steep and cobbled path through woodland all the way to the top of Padley Gorge. As the trees end, continue straight on through a metal gate and follow the path next to the stream. A series of flagstones leads to a narrow wooden bridge on the right. Cross and continue up and round through a wooden gate, then take the next left to cross the road.
- 2 Continue straight on through a small car park and follow the bridleway up through Burbage Valley. Take an obvious gravel footpath down to the left which leads past a plantation and over an old pack horse bridge, then continue uphill where the path is initially flagged and then quite boggy. For a fun scramble, pick your own way up towards a lone tree on top of the rocks to the left, which leads to the plateau on top of Carl Wark. Continue straight on across the plateau to a large stone wall and down a set of rough stone steps, then continue straight on towards Higgar Tor. After a steep ascent, turn left to follow the edge, then bear right, aiming to eventually drop off to the left towards a gate and lay-by at the road. Cross the road and continue straight on along a path which cuts the corner of the field. At the opposite side of the field, cross the road and follow the path towards Stanage Edge.
- 3 Take the path all the way up to the edge, then turn left and continue until the trees of Stanage Plantation are visible below. After passing the trees, look out for an even rockier section underfoot, then bear left to a path of well-worn stone leading steeply down in a hairpin back towards the plantation. Follow this all the way through the trees to the road and public toilets at Hollin Bank. From here, take the footpath next to the toilets signposted 'To Hathersage and Bamford'.
- 4 At a gate where woods open out to a field, take the right fork and continue straight on through a series of gates, passing the ruins of Holy Trinity chapel on the left. After the final gate turn left into woodland before the path crosses a stream. Continue straight on to a quiet road, and straight on again through a farm, passing allotments and a cricket pitch to emerge in Hathersage.
- 5 Turn right along the main road through the village, then turn left at the T-junction opposite The George. Just before the road bridge over the river, turn left along a private road to Harper Lees farm. At the farm, take the public footpath to the right, continuing straight on across fields and through woods to follow the river back to Grindleford. Turn left at the church and follow the road back up to The Maynard.

**DISTANCE:** 18 KM / 12 MILES **TIME:** ALLOW 6 HOURS **DIFFICULTY:** HARD  
**TOTAL ASCENT:** 480 M / 1575 FT

### EMBRACE THE OUTDOORS WITH THE MAYNARD PEAK DISTRICT WALKS

Whether you'd like to unwind on a peaceful woodland stroll, or work up an appetite with a full day's hike, we have everything you need, right here. Nestled in a valley in the heart of the Peak District, we're surrounded by some of the UK's most stunning landscapes. To help you get to know our home, The Maynard team have selected six of our favourite walking routes, taking in panoramic views, gritstone edges, ancient woodlands and peaceful pastures straight from our front door.

Sharing some unmissable highlights as well as lesser-trodden trails, our walking routes range from a one hour walk to a twelve-mile hike. To plan your perfect day, talk to our friendly team who can recommend the route for you, and provide a printed guide to help you on your way. When you return, we'll be waiting with a warm welcome as you take a seat for a pint in a cosy corner by the fireplace, or a refreshing Gin and Tonic in the garden.

### THANK YOU FOR LOOKING AFTER OUR HOME!

We love welcoming you to our home and thank you for being responsible walkers. Here are a few tips to get the most out of these routes, and keep the National Park in peak condition:

1. All our routes follow public footpaths over moorland or through woodland, so expect to encounter rocks, tree roots and mud. Choose suitable footwear - walking boots or trail running shoes with a good grip are good idea.
2. Bear in mind that the weather on the edges can often be significantly colder and windier than in the valley. Always pack extra layers and a waterproof.
3. The Peak District is home to vulnerable ground nesting birds as well as sheep and lambs. You must keep your dog on a lead around livestock and in lambing and nesting season (1 March to 31 July). Please be considerate to other visitors by cleaning up after your four-legged friends.
4. Many areas can be tinder dry and susceptible to moorland fires which burn unseen in the peat beneath the ground. Be careful when disposing of cigarettes, and remember that barbecues are banned in the national park.
5. Leave it better than you found it - bring everything you take on a walk back home with you (including tissues and toilet roll). If you see litter, bring that out too.
6. In case of emergency in remote areas call Mountain Rescue. Dial 999, ask for Police - Mountain Rescue. You can download the OS Locate app for free, which will give the grid reference for your location anywhere in Britain, even if you don't have phone signal.



### MILLSTONE & SURPRISE VIEW

This is a fascinating walk, as the millstones scattered in the woodland and moors around Grindleford reveal the surprising industrial archaeology hidden in some of the Peak District



### WHITE EDGE & FROGGATT EDGE

This route is a favourite because it takes us high along White Edge and Froggatt Edge, crossing moorland with incredible views and the chance to see some of the Peak District's most iconic wildlife.



### STANAGE EDGE EPIC

This varied route really takes us on a journey around the Peak District's finest edges, valleys and villages as we spend a day exploring Padley Gorge, Burbage Valley, Stanage Edge and Hathersage.

